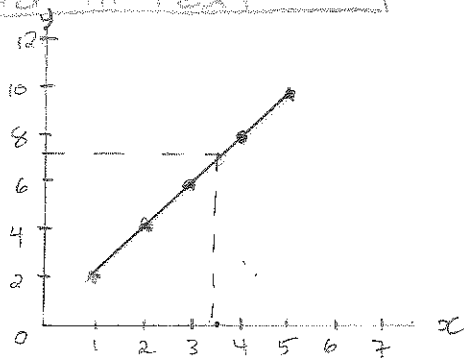


# Covid19 Work - Math Gr. 9

Interpolation - estimating a number in between the points on a graph.

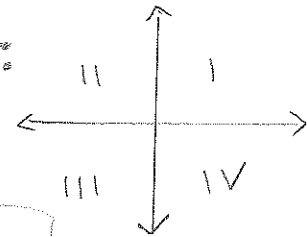
Extrapolation - estimating a number that goes beyond the points on a graph.

Example of Interpolation  
pg 222 in Text



x	y
1	2
2	4
3	6
4	8

Quadrants:  
num

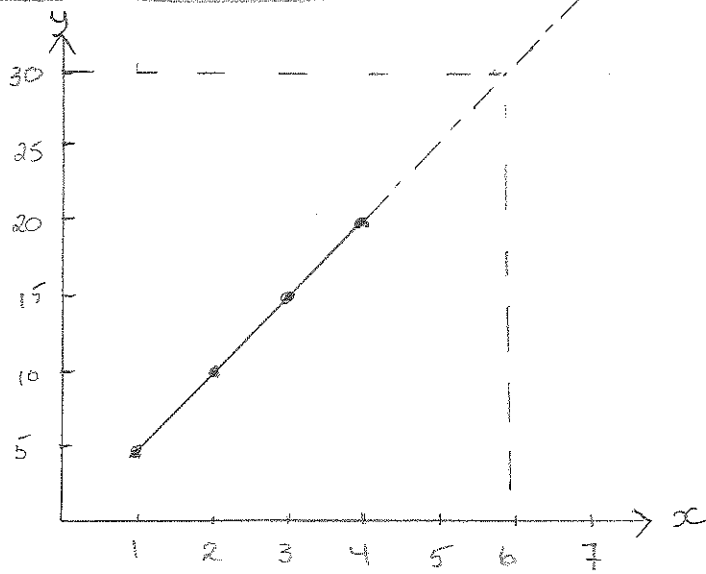


To find a point between the given numbers.

- What is the y value when x is at 3.5?
- The y value is 7.

## Example of Extrapolation

pg. 223 + 224 in Text



x	y
1	5
2	10
3	15
4	20

To find a point beyond the given numbers

What is the value of  $y$  when  $x$  is at 6?  
- The  $y$  value is 30.

To find tutorials on many other math assignments  
type in Crupi's Corner into Google Search.  
Find your appropriate grade and look  
through play list.